

# JUNSHIN GAKUEN UNIVERSITY 純真学園大学

Faculty of Health Sciences 保健医療学部

Department of Nursing 看護学科

Department of Radiological Science 放射線技術科学科

Department of Medical Technology 検査科学科

Department of Medical Engineering 医療工学科



Learn medicine at Fukuoka,  
the Gateway to Asia.



## President's Message

The history of Junshin Gakuen University reaches back over 50 years to establishment of the academy in 1956. Founder Masako Fukuda became the youngest-ever female Doctor of Medicine in Japan at the time through her research on histamine, and left behind many accomplishments in the fields of medicine and health. Drawing on her clinical experience, she acted as legislator in '50s and '60s and introduced the Public Health Laboratory Technologist Act and the Eugenic Protection Law, the forerunners of current laws including those concerning medical laboratory technicians. Entering the field of education, she established the first high school department of nursing as a private school. She was a pioneer in incorporating medical engineering education and set forth a philosophy of education founded upon preventive medicine and health science, creating a legacy of tradition that lives on in Junshin Gakuen to this day.

Inheriting the philosophies of school establishment set forth by our founder, and seeking to foster medical personnel with outstanding humanity and advanced skills, we established Junshin Gakuen University in April 2011. The school's education is marked by the pursuit of specialization and the cultivation of multifaceted perspectives. More specifically, the school devises its curriculum to emphasize team medicine that enables students to adopt the perspectives of physicians and other medical technicians, while they learn the professional knowledge of their departments.

We are charging ourselves with training human resources that will contribute to society in clinical and research fields, and are charging the University itself with contributing to the community, as we build a new history for the University.



Junshin Gakuen  
University  
President

Yonosuke Fukuda

## U n i v e r s i t y   G u i d e

### Academic Philosophy

#### noblesse oblige

A noble sense of mission

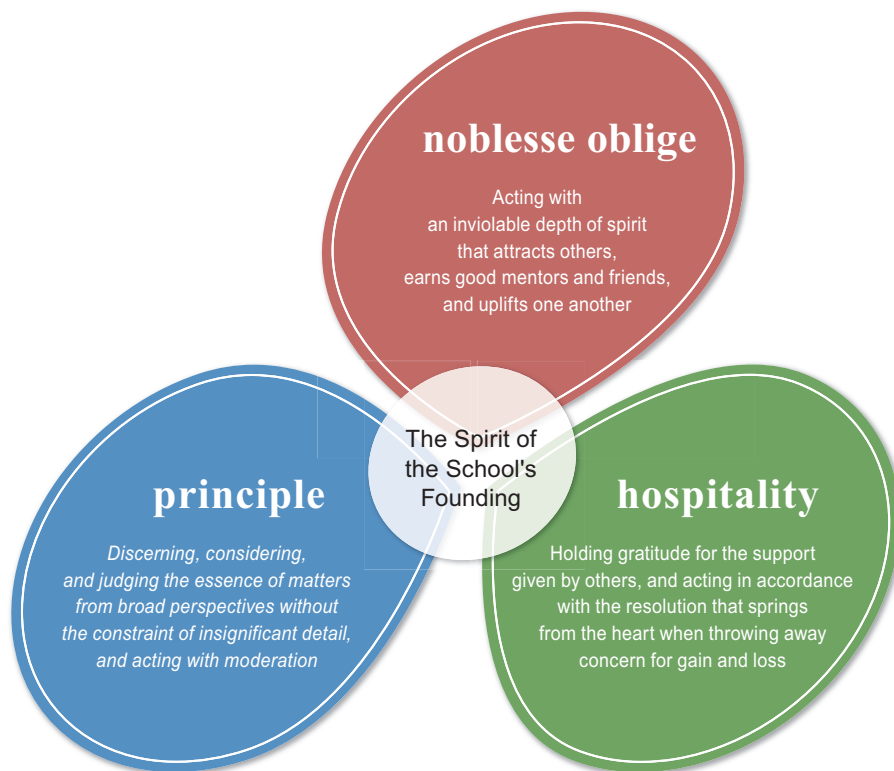
#### principle

Establishment of  
fundamental principles

#### hospitality

Wholehearted Service

Junshin Gakuen University aims to train human resources that combine the spirit of Nobility, Intellect, and Devotion with cutting-edge medical skills.



### History

1956

Junshin Girls' Academy established  
Junshin Girls' High School founded

1957

Junshin Girls' Junior College opened

1965

Junshin Girls' High School  
Department of Nursing established

1967

Tohwa University opened  
9-floor school building constructed

1983

Saitama Junshin Girls' Junior  
College opened

2007

Name of school changed to  
Junshin Gakuen

2011

Junshin Gakuen University opened

### Facilities



Junshin Gakuen main building



Building 2  
(Nursing, Radiological Science)



Building 3  
(Medical Technology)



Building 4  
(Medical Engineering)

## Organization

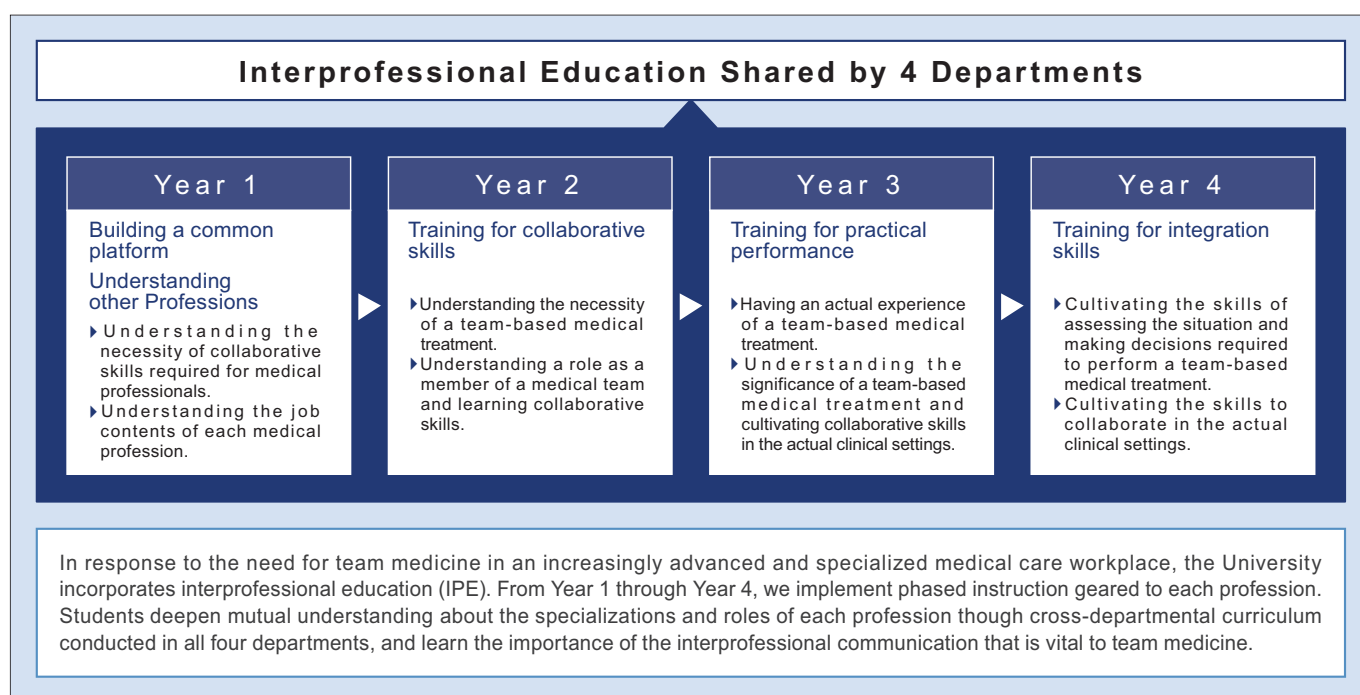
### Faculty of Health Sciences (4 departments)

- Number of students: 1,108 / Number of professors: 31 / Number of lecturers: 60
- Academic year: 2 semesters (April to March)
- School library holdings: 70,000 volumes

### Departments

- |                                     |   |
|-------------------------------------|---|
| • Nursing (quota: 320)              | Available degree: Bachelor of Science in Nursing        |
| • Radiological Science (quota: 240) | Available degree: Bachelor of Science in Health Science |
| • Medical Technology (quota: 240)   | Available degree: Bachelor of Science in Health Science |
| • Medical Engineering (quota: 160)  | Available degree: Bachelor of Science in Health Science |

## Educational Attributes of the School (IPE)



## Curriculum

Nursing	Radiological Science	Medical Technology	Medical Engineering
General Education Program Basic Biology / Basic Chemistry / Statistics / English I, II / Introduction to Life Sciences / Introduction to Information Processing / Psychology / Gender Studies / First Aid in Daily Life / etc.			
<b>Shared Professional Program</b> Life and Medical Ethics <b>Professional Basics Program</b> Functional Morphology I, II / Nutritional Science, Metabolism / Introduction to Medical Science / Pathology / Clinical Pharmacology / Health Science / Introduction to Health Promotion / Public Health Science / etc. <b>Professional Program</b> Introduction to Nursing Science / Physical Assessment Technology / Support Techniques for Daily Life / Introduction to Adult Nursing Science / Introduction to Pediatric Nursing Science / Introduction to Psychiatric Nursing Science / Medical Assistive Technology / Nursing Process Development Technology / General Clinical Nursing Science / Theory of Cares in Adult Nursing I, II / Introduction to Gerontological Nursing Science / Theory of Cares in Gerontological Nursing I / Introduction to Maternal Nursing Science / etc.	<b>Shared Professional Program</b> Life and Medical Ethics <b>Professional Basics Program</b> Radiation Biology / Radiation Management / Radiochemistry / Medical Physics / Radiation Measurement / Radiation Therapy Technology / Introduction to Radiation Biology and Medicine / Special Lecture Radiation / Applied Physics / Applied Mathematics / Applied Biology / Applied Chemistry / Anatomy I, II / Biochemistry / Pathology / Public Health Science / Medical Electronics Engineering / Introduction to Radiation Technology / etc. <b>Professional Program</b> Medical Imaging Anatomy I / Medical Imaging Equipment Engineering I-III / Technology of Clinical Imaging I, II / Technology of Clinical Imaging Training I / Introduction to Clinical Nuclear Medicine / Technology of Nuclear Medicine I, Radiation Oncology / Medical Accelerator / Medical Photographic Engineering / Medical imaging Science / etc.	<b>Shared Professional Program</b> Life and Medical Ethics <b>Professional Basics Program</b> Anatomy and Physiology I, II, Practice in Anatomy and Physiology / Physiology I, II / Biochemistry I, II / Introduction to Laboratory Medicine / Clinical Examination Experience Practice / Pathology I, II / Microbiology / Public Health Science / etc. <b>Professional Program</b> Medical Laboratory Instruments / Laboratory Medicine I / Laboratory Hematology / Pathology and Histotechnology, Practice in Pathology and Histotechnology / Practice in Laboratory Medicine, Clinical Chemistry I, II / Laboratory Immunology, Practice in Laboratory Immunology / Blood Transfusion and Transplantation Laboratory Medicine, Practice in Blood Transfusion and Transplantation Laboratory Medicine / Laboratory Microbiology I, II, Practice in Laboratory Microbiology / Laboratory Physiology I, II, Practice in Laboratory Physiology / Medical Imaging Technology / etc.	<b>Shared Professional Program</b> Life and Medical Ethics <b>Professional Basics Program</b> Primitive Clinical Lecture / Anatomy / Public Health Science / Introduction to Medical Science / Introduction to Electrical Engineering and Electronics / Electric Circuits of Direct Current / Electrical Mathematics / Applied Mathematics / Applied Physics / Information Processing Engineering / Biomaterial Engineering / Medical Information System / Medical Machine Engineering / Physiology / Pathology / Introduction to Nursing Science <b>Professional Program</b> Medical Engineering / Electrical and Electronic Measurement / Biogenic Measurement Equipment / Medical Device I, II / Biophysics / Clinical Medicine I, II / Medical Treatment Device / Biological Function Substitution Equipment I-VI / Medical Equipment Safety Management / Clinical Medicine III-V / Clinical Engineering Experiment I, II / etc.

## Educational Plans of Department

### Nursing

Available degree: BSN

#### Qualifications

- Candidacy for nurse
- Candidacy for public health nurse

Students learn the importance of team medicine through cooperation with other departments, along with the professional knowledge, skills, and attitudes required for nurses. They also cultivate a sensitive humanity that is broadly cultured on a foundation of the communication and interpersonal relation-building capabilities sought in medical personnel.



	Educational objectives	Professional education	Team medicine	Career support
Year 1	Strengthening of basics for medical personnel	General Education Program Shared Professional Program Professional Basics Program Intramural Seminar	Professional Awareness Training Understanding Team Medicine	► Self-discovery 4-year course planning and goal-setting
Year 2	Coursework in basic knowledge and skills for nursing	Professional Basics Program Professional Program Intramural Seminar		► Career development and capability development Acquisition of knowledge and capabilities for career achievement
Year 3	Coursework in developing capabilities through nursing practice	Professional Program Intramural Seminar Field Training		► Preparation for career-building activity Career selection matched to students' capabilities
Year 4	Pursuit of better nursing	Field Training Integrated Fields		► Career-building activities Toward self-achievement

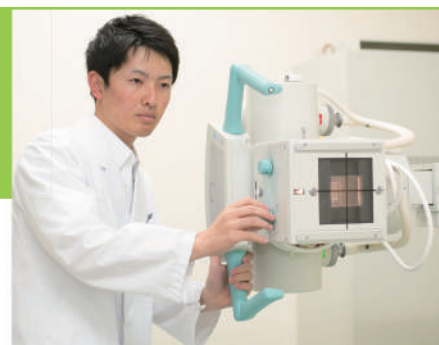
### Radiological Science

Available degree: BS

#### Qualifications

- Candidacy for radiological technologist

Modern medicine is not possible without the use of radiation. Department students train as radiological technologists with intellect and education appropriate to medical personnel, while acquiring the professional knowledge and radiology skills to operate the latest radiological equipment.



	Educational objectives	Professional education	Team medicine	Career support
Year 1	Basic skills training for medical personnel	General Education Medical Basics	Professional Awareness Training Understanding Team Medicine	► Self-discovery Guidance
Year 2	Coursework in professional and basic knowledge	Physics Program Basic Medicine Program Radiology Lab		► Career development and capability development Acquisition of knowledge and capabilities for career achievement
Year 3	Acquiring readiness for radiology	Clinical Training Professional Program and Lab		► Preparation for career-building activity Career selection matched to students' capabilities
Year 4	Practice of patient care	Clinical Training Graduate Research		► Career-building activities Goal achievement

# Medical Technology

Available degree: BS

Qualifications

■ Candidacy for medical technologist

Department students acquire professional knowledge and basic skills concerning clinical laboratory work. They train as clinical laboratory technicians with the intellect and education appropriate to members of team medicine, including rich humanity, ethical stance, and communication abilities through cooperation with other departments.



	Educational objectives	Professional education	Team medicine	Career support
Year 1	Basic skills training for medical personnel	Professional Basics Program Intramural Training	Professional Awareness Training Understanding Team Medicine	► Self-discovery
Year 2	Strengthening of medical laboratory science basics	↓ Professional Program Intramural Training		► Career development and capability development
Year 3	Deepening of professional knowledge and skills	↓		► Preparation for career-building activity
Year 4	Practice and application of medical laboratory science	Clinical Training	↓	► Career-building activities

# Medical Engineering

Available degree: BS

Qualifications

■ Candidacy for clinical engineer

Students in this department balance medical knowledge with the engineering knowledge to operate and maintain life-sustaining devices and to keep up with ever-progressing medical devices. In addition, as medical devices must be adjusted to the condition of individual patients, the department also aims to improve the communication abilities that are vital in the workplace. Moreover, to deepen knowledge of medical information systems, the department offers medical information-related courses as electives.

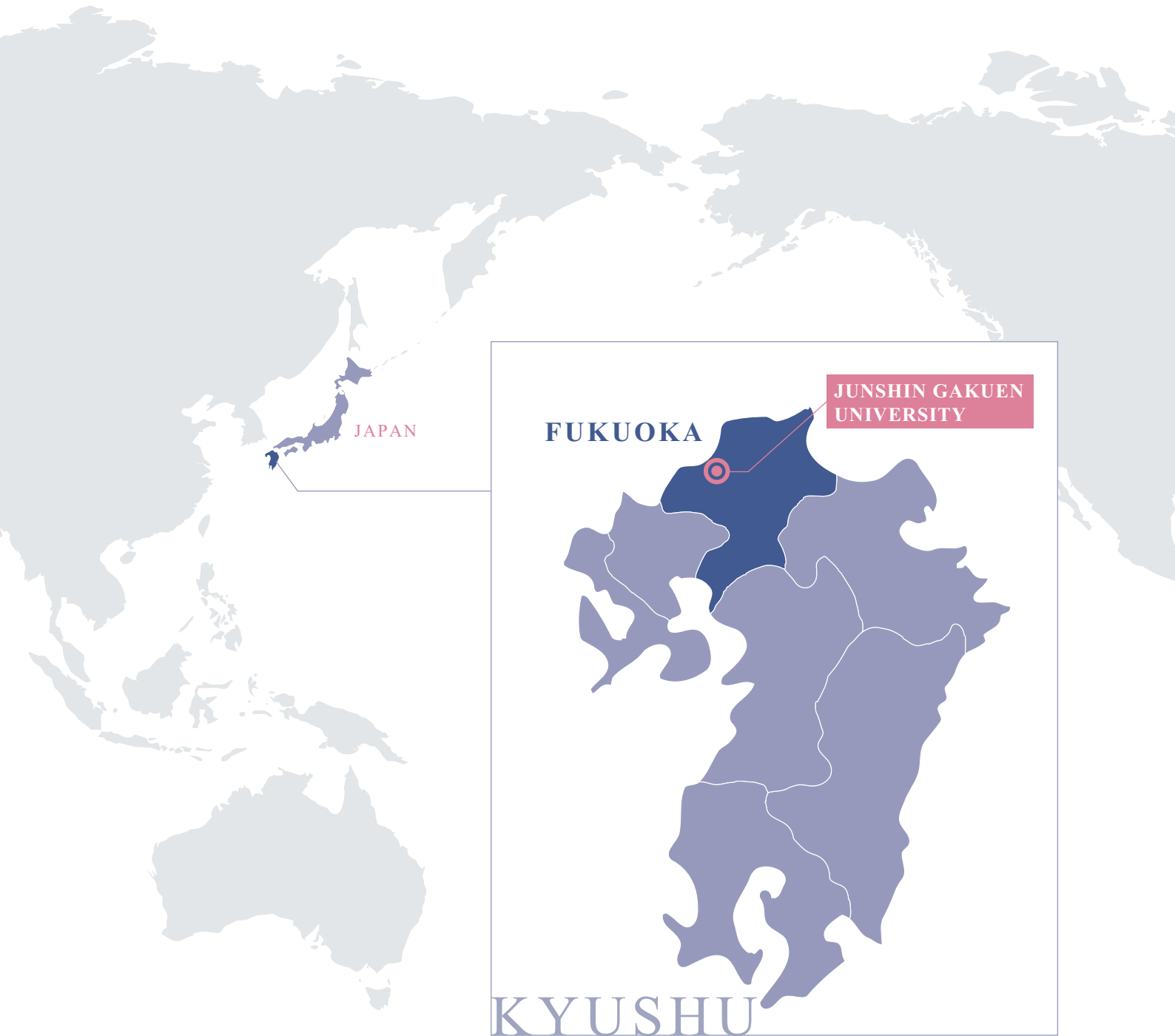


	Educational objectives	Professional education	Team medicine	Career support
Year 1	Basic skills training for medical personnel	Engineering Basics Program Medical Basics Program	Professional Awareness Training Understanding Team Medicine	► Self-discovery
Year 2	Professional Basics Program coursework	Engineering Program Medical Program Engineering Basic Lab		► Career development and capability development
Year 3	Professional Program coursework	Engineering and Medical Lab Clinical Practice Professional Program		► Preparation for career-building activity
Year 4	Clinical training and graduate research	↓ Graduate Research	↓	► Career-building activities

## The Location of JUNSHIN GAKUEN UNIVERSITY

One of Japan's major cities, Fukuoka is the largest city in Kyushu Island, and is also one of Northeast Asia's most cosmopolitan cities. Students from all areas of Japan and from all over the world gather to study at Fukuoka's many institutions of higher education.

Junshin Gakuen University is located only one mile from the center of the city, providing its students an ideal environment for study and for convenient lifestyles.







### ① Tenjin area

One of the trendsetting areas of pop culture of Fukuoka, Kyushu, also in Japan, to enjoy themselves here many people of all generations come.



### ② Fukuoka International Airport

Fukuoka Airport is located in 3 miles from core city. Domestic flights to almost every city and international flights to more than 20 cities are in service from it. It has the 3rd most annual operational frequencies of Japan.

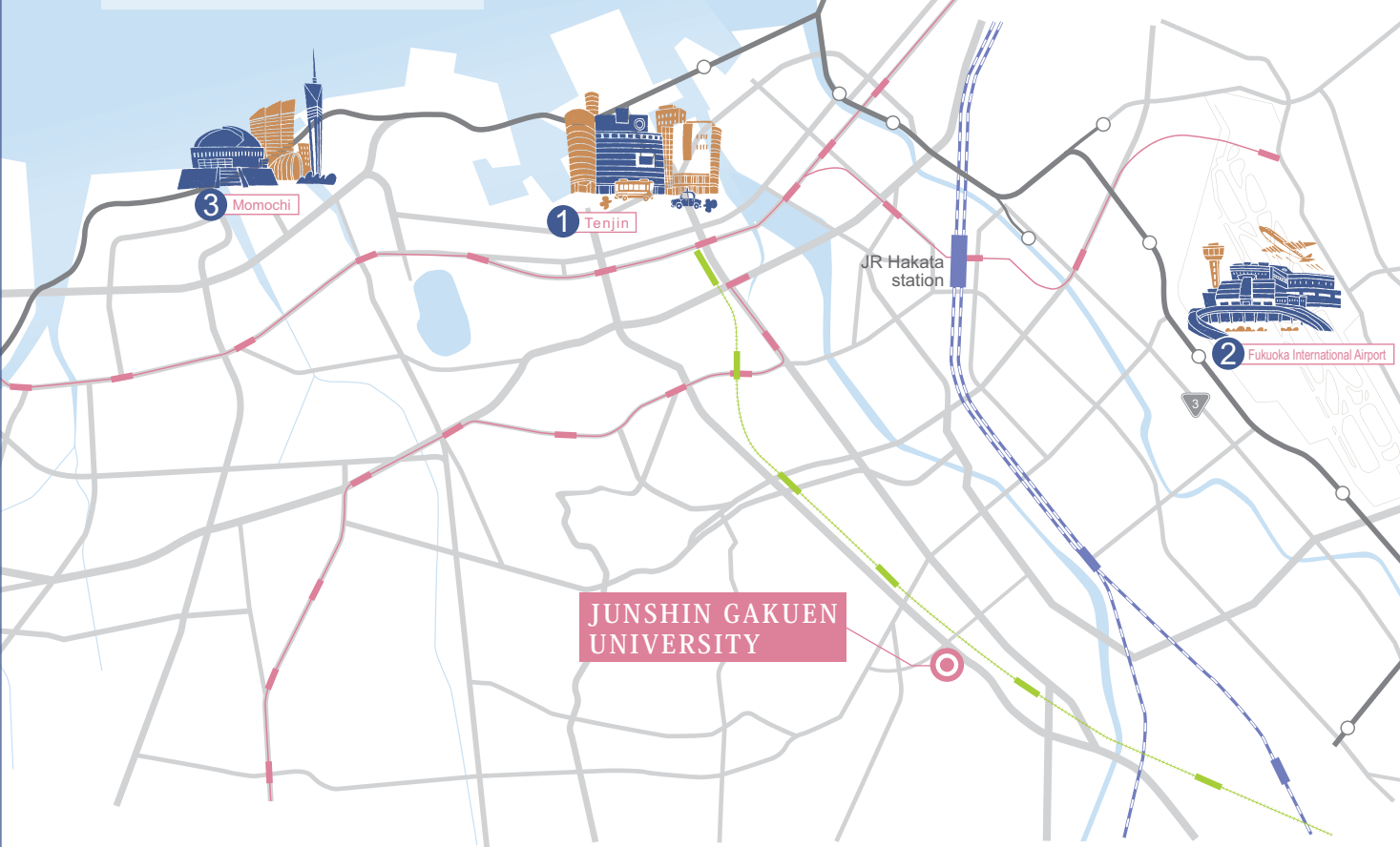


### ③ Momochi area

There are various representative constructions in this area, Fukuoka Tower, Yahoo Japan Domed baseball Stadium, Municipal General Library, Municipal Museum, etc.

# FUKUOKA

-  Subway
-  Nishitetsu Train
-  JR (Japan Railway)
-  Fukuoka Urban Expressway





純真学園大学  
JUNSHIN GAKUEN UNIVERSITY

TEL: **+81-92-554-1255**

1-1-1 Chikushigaoka, Minamiku, Fukuoka City, 815-8510, Japan  
FAX: +81-92-552-2707

**URL** <http://www.junshin-u.ac.jp>

**E-mail** [daigaku-info@junshin-u.ac.jp](mailto:daigaku-info@junshin-u.ac.jp)

Junshin Gakuen Academy

JUNSHIN JUNIOR COLLEGE

JUNSHIN HIGH SCHOOL

SAITAMA JUNSHIN JUNIOR COLLEGE

